

# Atharv Casa

COME HOME TO COMFORT





Atharv  
Rosewood  
2014



Atharv  
Shagun  
2016



Atharv  
Palace  
2018



Atharv  
Pride  
2019



Atharv  
Saraswati  
2020



Atharv  
Navasamaj  
2021



Atharv  
Murli  
2021



Atharv  
Laxmi  
2022



Atharv  
Heights  
2022



Atharv  
Aaradhyam  
2023



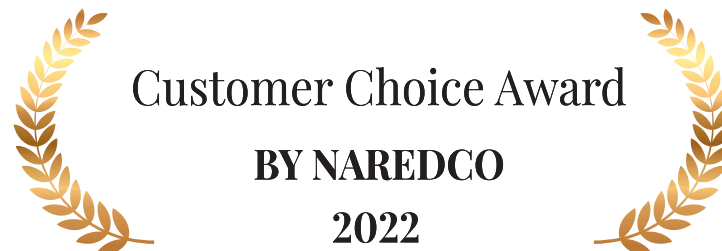
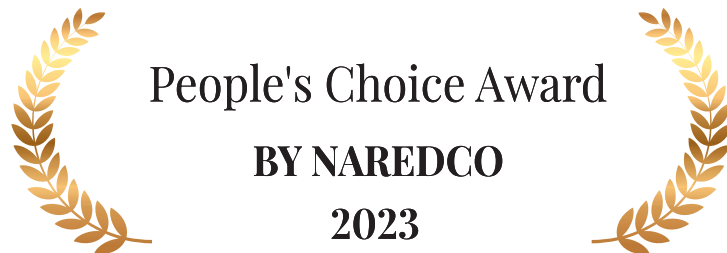
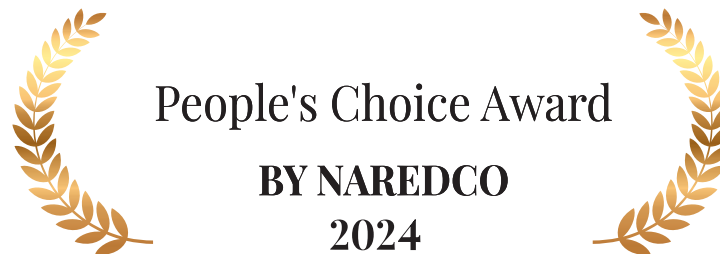
Atharv  
Abrol  
2023





# *Our Achievements*

---



**16+**  
**LANDMARK PROJECTS**

**11 YRS**  
**OF BUILDING TRUST**

**1000+**  
**HAPPY FAMILIES**

**100+**  
**IN-HOUSE STAFF**



*Discover your perfect  
CASA with*

*COZY 2BHK*

*COMFORTABLE Homes*

*CONVENIENT Connectivity*

Atharv Casa comprises of a warm and welcoming atmosphere with affordable living.

We've created a space that is not only beautiful but also feels like a home away from all the commotion, offering comfort and convenience at once.



# BALCONY

WHEN IN NEED FOR A BACKGROUND,  
THE BALCONY NEVER FAILS!

*At Atharv Casa enjoy your coffee with the  
best of views in your balcony to unwind and relax.*





*CHERISH EVERY SUNSET,  
WITNESS THE BEAUTY AND AWE  
OF EVERY EVENING!*

# TERRACE GARDEN

*At Atharv Casa experience a serene terrace garden that offers stunning views of the city's skyline, and is a perfect place to interact with your neighbours and de-stress from your daily routine!*





# FITNESS CENTRE

*HEALTH AND TIME ARE TWO PRECIOUS  
ASSETS THAT WE DON'T APPRECIATE UNTIL  
THEY HAVE BEEN DEPLETED!*

*At Atharv Casa elevate your fitness  
routine with the latest equipment for an  
effective workout at your doorstep.*



LUXURIOUS LOBBY



SOCIETY OFFICE



AMPLE PARKING



At Atharv Casa we provide valuable facilities that are designed to provide a relaxing and rejuvenating experience, so you can unwind and escape the stress from everyday's hustle.

- A seamless and attractive lobby to welcome you and your guests.
- An efficient society office to hold your meetings and conferences with ease.
- Ample parking facility which provides the most comfortable solutions for managing parking.





## COMMON AMENITIES

### PROJECT HIGHLIGHTS

- Premium finished entrance lobby
- Fitness centre
- Terrace Garden
- Well planned 1 & 2 bhk with jodi options
- Ample car parking space & tower parking
- Servant toilets

### PROJECT HIGHLIGHTS

- Elevators with Auto Rescue Device (ARD)
- Rain water harvesting system
- Hi-tech surveillance

## INTERNAL AMENITIES

### SECURITY & SAFETY FEATURES

- Building/s designed for earthquake loads as per applicable I.S.Code
- CCTV surveillance in designated common areas
- Firefighting systems as per MCGM norms
- Sprinkler systems
- Video door phone and intercom facility at apartment entrance

### KITCHEN FEATURES

- Granite platform, service platform and vitrified dado above platform
- Single bowl stainless steel sink
- Piped gas connection
- Hot & Cold Cork

Every Inch  
Is Crafted With  
Care.

### LIVING ROOM & BEDROOM FEATURES

- Well-arranged living area along with dining space
- Vitrified Flooring in living, dining & passage
- Powder coated / anodized aluminum sliding window
- Gypsum finished internal walls with LOW VOC paint finish
- Provision of split AC's in all rooms
- Veneer finished fire resistant door
- Laminate finished internal doors

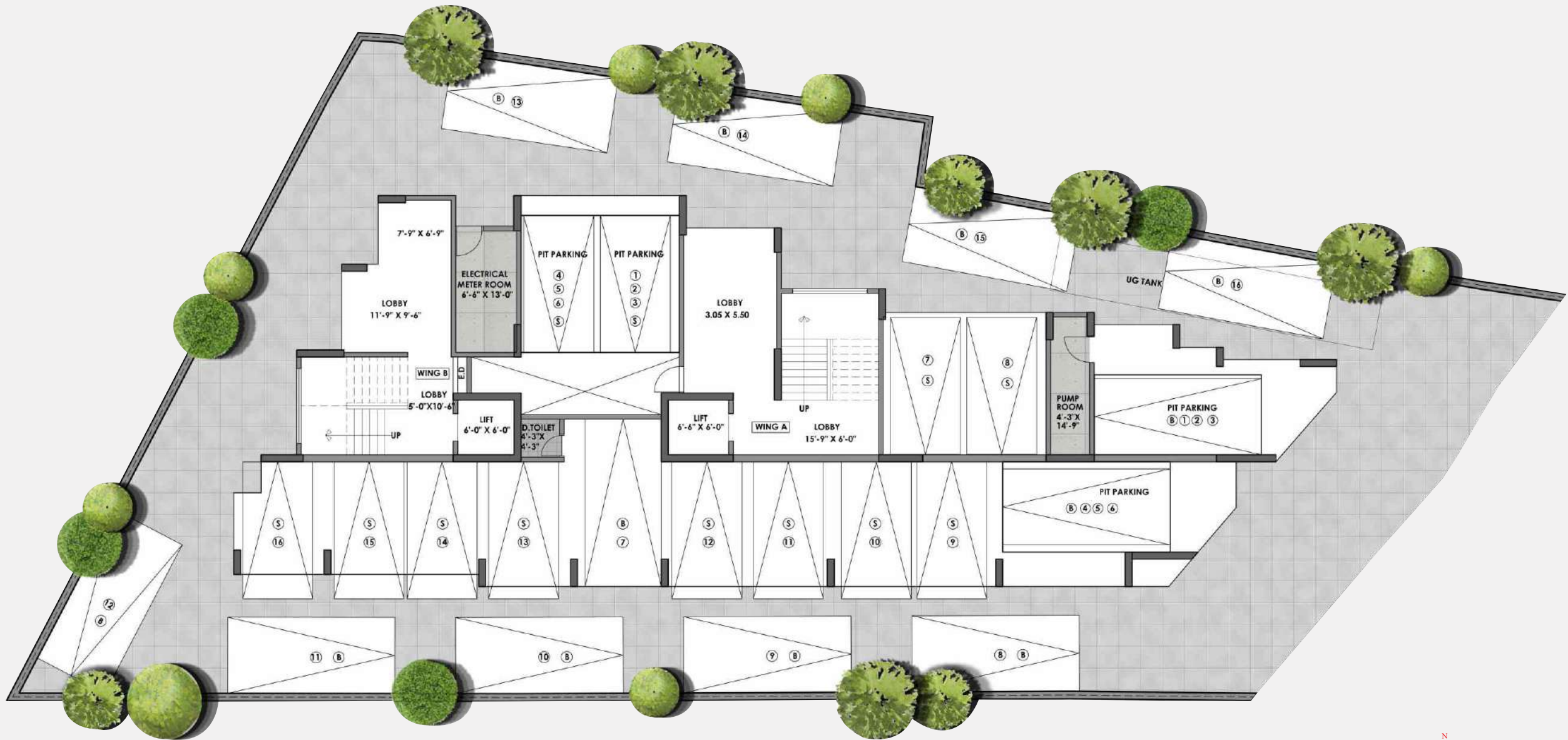
### BATHROOM FEATURES

- Vitrified flooring & dado up to door height in all bathrooms
- Wash-basin counter in all bathrooms
- Premium sanitary and CP fittings

# FLOOR PLANS



# Ground Floor



Sales disclaimer : Subject to RCC planning and MCGM approval, column placement will be subject to IOD approval.

## 1st to 3rd Floor





## 4th & 5th Floor



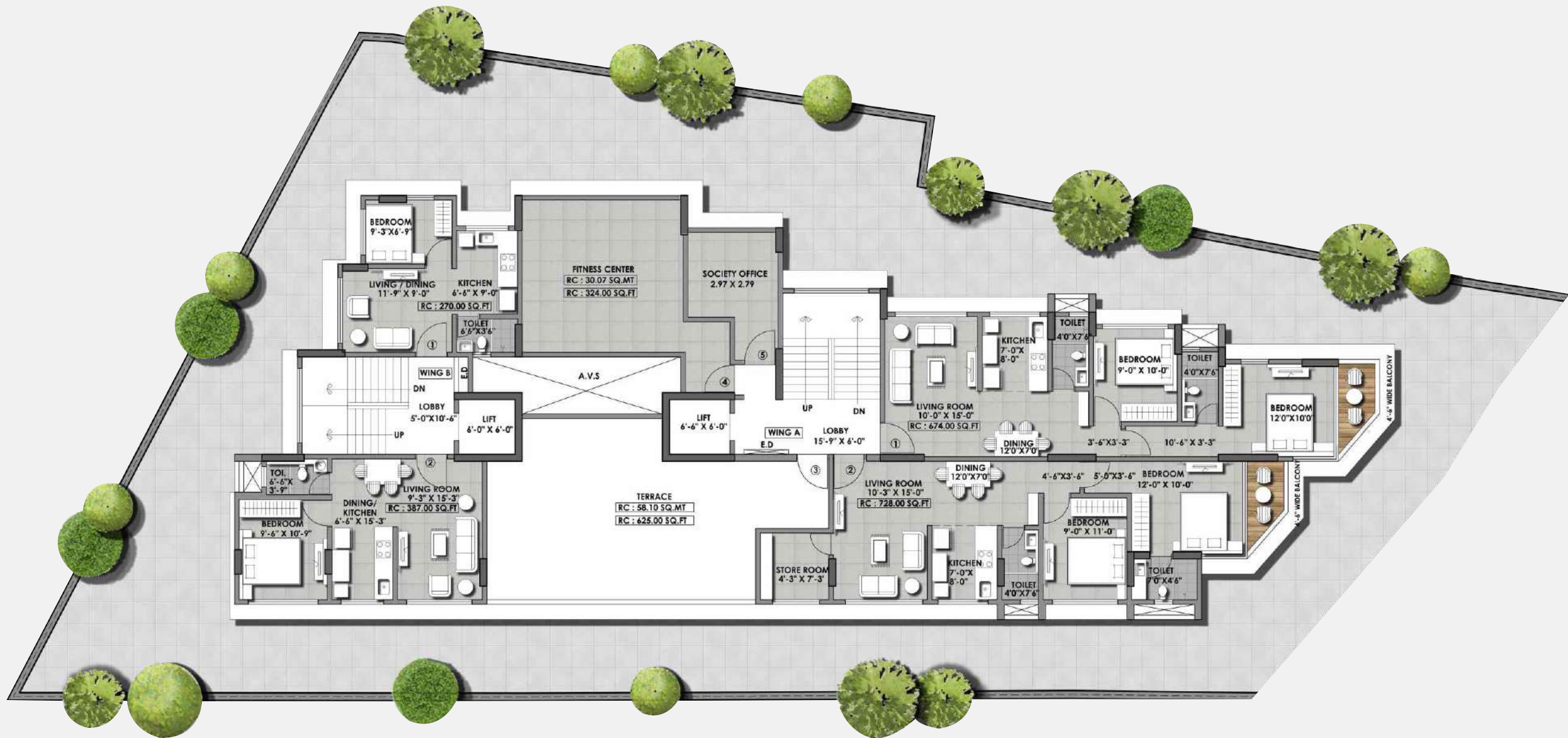
Sales disclaimer : Subject to RCC planning and MCGM approval, column placement will be subject to IOD approval.

## 6th Floor





# 7th Floor



Sales disclaimer : Subject to RCC planning and MCGM approval, column placement will be subject to IOD approval.

# Surrounding Locations

## Hospitality:

Sahara Star  
Taj  
Ibis  
JW Marriot  
The Orchid

## Educational Institutions:



Sathaye College  
Dahanukar College  
Parle Tilak Vidyalaya  
Mahila Sangh  
CNMS School  
Jamnabai Narsee School  
NM College  
Mithibai College



## Religious Avenues in the Vicinity:

Parleshwar Mandir  
Shree Chintamani Jain Derasar  
Ram Mandir  
Shree Mahalaxmi Mandir  
Shree Swami Samarth Math  
Shree Datta Mandir



## Retail & Entertainment:

DMART  
Agarwal Market  
Suncity Cinema  
Bahar Cinema  
PVR Cinema  
Bhaidas Hall  
Dinanath Mangeshkar Natyagruha  
Reliance Smart Bazaar  
Sahakari Bhandar



## Recreation:

Lokmanya Seva Sangh  
Prabodhankar Thackeray Krida Sankul  
Dubhashi Play Ground  
PTVA Cricket Academy

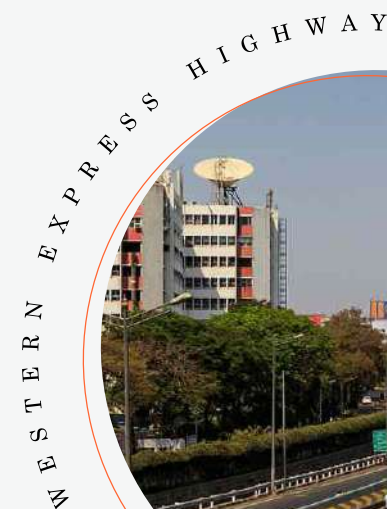
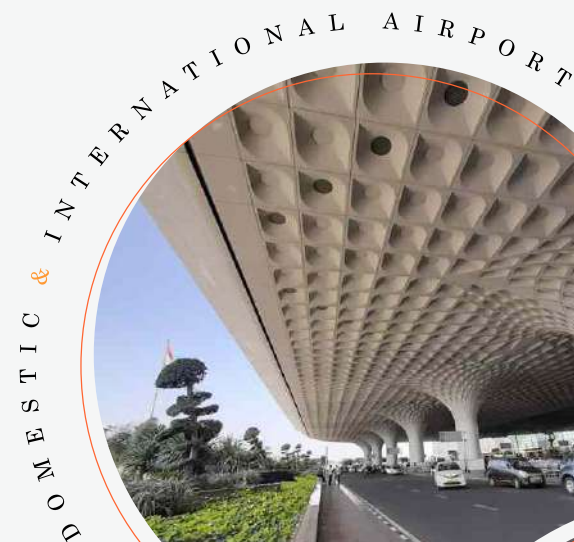


## Hospitals:

Fourcare  
Nanavati  
Cooper  
KLS  
Wagh Maternity Hospital



Vastu by Ishan Vaastu.







ISKCON TEMPLE

MUKESH PATEL SCHOOL  
OF TECHNOLOGY

COOPER  
HOSPITAL

BHAGUBHAI  
MAFATLAL  
POLYTECHNIC

JAMNABAI NARSEE SCHOOL

CNMS SCHOOL

PRABODHANKAR  
THAKRE SPORTS CLUB

Atharv  
CASA

BAHAR CINEMA

NMIMS  
INSTITUTE

BHAIDAS  
HALL

MITHIBAI  
COLLEGE

S. V. ROAD

Atharv Shagun

VILE PARLE  
RAILWAY  
STATION

Atharv Laxmi

CHINTAMANI  
JAIN DERASAR

SUNCITY CINEMA

PARLE TILAK VIDYALAYA

HANUMAN ROAD

SWAMI SAMARTH MATH

PARLESHWAR  
MANDIR

Atharv Saraswati

LOKMANYA  
SEVA SANGH

FOURCARE  
HOSPITAL

Atharv Murli

PTVA CRICKET  
ACADEMY

Atharv Pride

SATHAYE  
COLLEGE

DAHANUKAR  
COLLEGE

DUBASHI PLAY  
GROUND

Atharv Rosewood

PETROL  
PUMP

Atharv Navasamaj

SAHARA STAR  
HOTEL

CHHATRAPATI SHIVAJI  
INTERNATIONAL AIRPORT

Atharv House

NANAVATI HOSPITAL

AGARWAL  
MARKET

RAM  
MANDIR

Atharv Heights

NEHRU ROAD

WESTERN EXPRESS HIGHWAY

WESTERN EXPRESS HIGHWAY



**MAHARERA NO.: P51800054258**

---

Site Address: Shanti Sadan CHS, Sahakar Road,  
Vile Parle East, Mumbai - 400057.

Corporate Office: Atharv House, Nariman Road,  
Vile Parle East, Mumbai - 400057.

Mob.: +91 77388 66111

[www.atharvlifestyle.com](http://www.atharvlifestyle.com) | [sales@atharvlifestyle.com](mailto:sales@atharvlifestyle.com)



---

Disclaimer : For personal information only not for public circulation

Disclaimer: Unless otherwise stated, all the images, visuals, materials and information contained herein are purely creative/artistic concepts and may not be actual representations of the product and/or any amenities. None of the above may be construed to form any basis of, or serve as an inducement/solicitation or invitation for payment of any advance and/or deposit, to be made by a prospective customer, under relevant provisions of law or otherwise. The plans, designs, dimensions and elevations are as per current sanctioned plans and approvals, specifications, amenities and facilities will be set out in the agreements for sale and ancillary documentation and the images are artistic impressions and purely for representational purposes. The same may be subject to changes/revisions/alterations in terms of approvals, orders, direction sand/or regulations of the concerned/relevant authorities, and/or for compliance with laws/regulations in force from time to time. In view of the above, and in line with our customer policies, we may change/alter the above in consonance with approvals, orders, directions, applicable laws, regulations, etc. The furniture, furnishings, fixtures, fittings, electronic goods, accessories and any other item displayed in floor plan are only indicative in nature. The company/firm/promoter/developer is not liable or required to provide the furniture, furnishings, fixtures, fittings, electronic goods, accessories and any other item as displayed in floor plan. Minor variations (+/-3%) in actual carpet area may occur on account of column position.